



Inspectra MAX



+1(909) 906-1001
sales@ecotecco.com



The Inspectra Max is an accurate methane analyzer with full traceability. Sensitive to below 1ppm, this model offers all the advantages of optical detection in a highly compact and portable device. With precise and reliable methane readings that can follow planned routes, operators can view results on a smartphone via Bluetooth connection to an integrated data platform.



- Landfill Surface Emissions Monitoring
- Leak detection for operations and loss of product gas
- Emissions measurement and qualification
- Leak Survey
- Fully integrated mobile app

Applications

Utility Networks

Landfills

Digesters/Lagoons

Key Benefits

No Calibration Needed

No Drift

Methane Specific

Meets Method 21 requirements

Compact & Lightweight

<1ppm to 100% volume CH₄

Fully integrated Datafield/Gazosurvey mobile application

Inspectra MAX | Technical Specification



MEASUREMENTS

SENSOR	TYPE	UNITS	RANGE	DETECTION THRESHOLD	RESPONSE TIME (T90)	PUMP FLOW RATE
CH ₄	Laser	ppm % gas volume % LEL (optional)	0-100% gas volume	0.5ppm	4.5s 6s (with suction rod)	30l/h (slow speed) 70l/h (high speed)

PHYSICAL

Display	LCD screen with backlight 60° viewing angle Contrast constant from -15°C to +50°C / +5°F to +122°F Continuous reading display	Gas connection	Quick-connect inlet coupling with locking mechanism Quick-connect gas outlet coupling
Keypad	5 direct control keys Protected-access scrolling menu	Electrical connection	Male power plug 2.1mm for battery charge External bluetooth connector (optional)
Start-up time	<15s	Dimensions	263mm x 113mm x 141mm 10.3" x 4.4" x 5.5"
Alarms	Visual and audio Concentration threshold Pump stop / pump error	Weight	2.7kg / 5.95lbs with batteries
Status indicators	Battery charge level Pump status	Protection rating	IP54

POWER SUPPLY

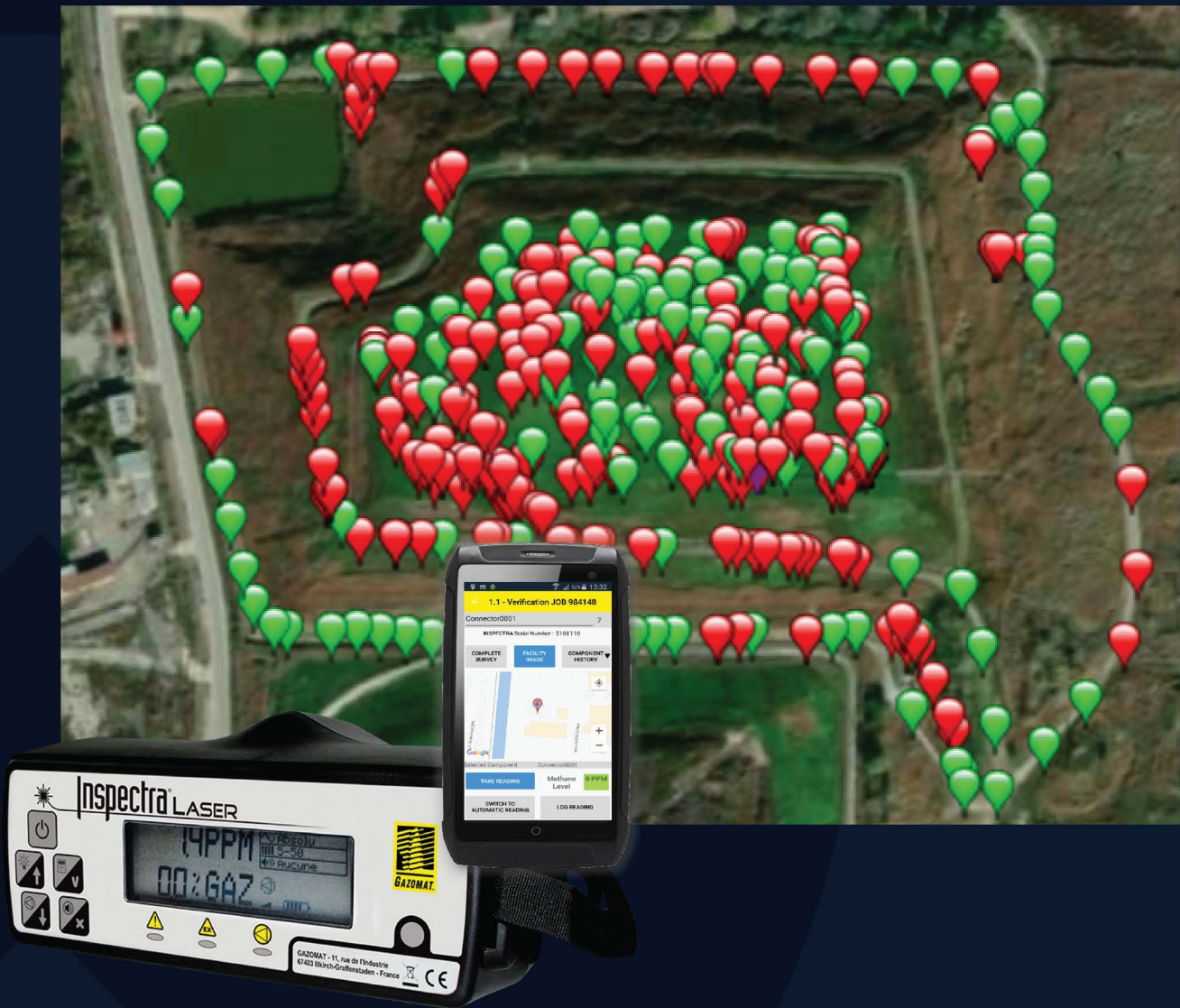
Battery type	NiMH rechargeable battery pack: 3 x 1.2V-6450mAh	Operating temperature	-15°C to +50°C / +5°F to 122°F
Battery life	12 hours at 20°C to 25°C / 68°F to 77°F	Atmospheric pressure	1013mbar (+/- 100mbar)
Battery charger	100-240VAC 50Hz-60Hz	Humidity	5 to 80% relative humidity
Charge time	10 hours at 1Ah		

ENVIRONMENTAL CONDITIONS

CERTIFICATION RATING

Standard conformity	CE Marking EN 61010 :2010 + A1:2019/AC 2019 -04 Safety requirements for electrical equipment for measurement, control and laboratory use EN 50270 :2015 Electromagnetic compatibility	Connection	Bluetooth communication with mobile devices (optional)
ATEX Zone 1	Ex II 2 G Ex ib op is IIB T3 Gb INERIS 19ATEX0018X	Data recording	Data transfer to Datafield/Gazosurvey ⁴ mobile application (optional)
IECEX	II2G Ex ib op is IIB T3 Gb IECEX INE 19.0017X		

DATA & COMMUNICATIONS



- High Methane Sensitivity, down to 0.5 ppm
- Continuous Display from 0 ppm to 100% vol. CH₄
- GPS survey traceability with mobile software
- Audible and Visual Alarms

 **ecotec** ecotecco.com

850 S. Via Lata, Suite 115, Colton, CA 92324